

# RANGER 2

## PRO POOL SERIES

ITEM# F-RNGR2

U.S. Patent No. D507,769S



### ABOUT

Low profile, small footprint, and ease of operation - all these reasons and more make the Ranger 2 our #1 selling pool lift.

Often copied but never duplicated, this timeless lift is field reversible and easy to both operate and troubleshoot.



### FEATURES:

- ADA Compliant & UL Safety Certified
- 350 lb (160 kg) weight capacity
- Adjustable base plate and footrest
- Field reversible
- Stainless steel with powder coat finish
- Limited five (5) year warranty
- Ships common carrier, some assembly required
- Made in USA



### STANDARD COLOR OPTIONS:

PLASTICS

GRANITE WHITE

GRANITE TAN

GRANITE GREY

GREY

BLUE

TAN

POWDER COAT

GREY

WHITE

TAN

PROUDLY SOLD BY:

Affordable recreation equipment for people of all abilities.

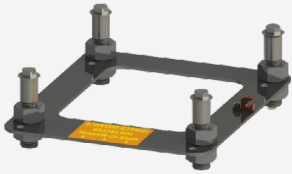
1.888.687.3552 | [aquacreek.com](http://aquacreek.com) | [sales@aquacreek.com](mailto:sales@aquacreek.com)

# RANGER 2

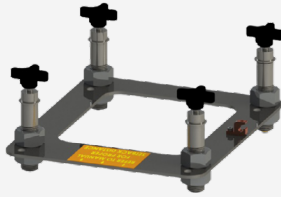
## APPLICATIONS:

This lift works on in-ground pools and spas. To see if the Ranger 2 works on your pool, visit our website and download the application guide, or contact our friendly sales team. This lift can also be anchored to pool decks made of concrete, pavers and even wood. Choose the appropriate anchor system for your needs. Anchors sold separately.

Standard Anchor  
F-04CAJP



Standard w/Quick Attach Knobs  
F-046QAB-AT1



Paver Anchor  
F-08CAJP



Wood Deck Anchor  
F-40220-AT1



For access to CADs, Revit drawings and more visit our Partner Login page on our website and become an Aqua Creek partner.



## OPTIONS & ACCESSORIES:

- Anchor options for concrete, paver, and wood deck applications
- Adjustable height seat pole
- Chest strap for additional upper body support
- Cover to protect your investment from the elements\*
- Cycle attachment to convert to an exercise bike
- Headrest for comfortable head support
- Pull out legrest for additional wall clearances
- Solar charging station to conserve energy
- Transport cart for easy removal from pool side for storage\*\*

*\*Color and material options available*

*\*\*Transport cart not usable with semi recessed anchor*

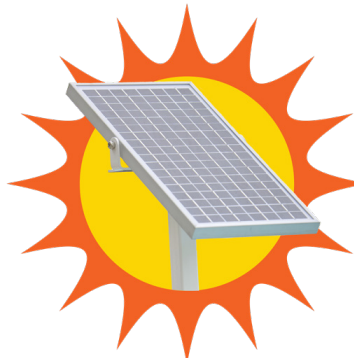
## SCAN ME



Use your mobile device to scan the code and view the product webpage.



Match your branding or decor with the custom color of your choice. Additional charges may apply.



Solar chargers can help extend the life of your battery and reduce the need to remove it for charging.



Protect your investment from the elements with a premium cover.

