

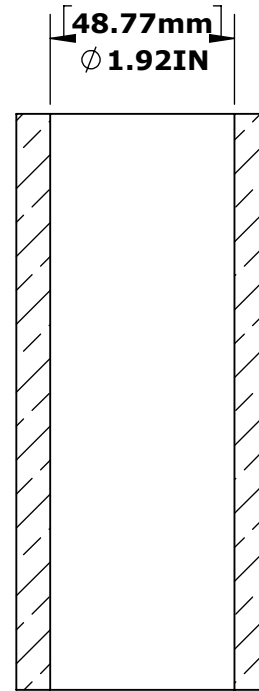
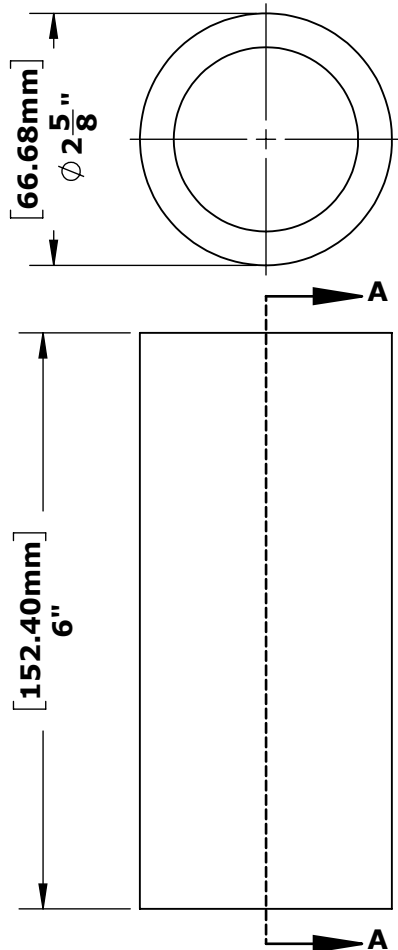
REVISIONS			
REV.	DESCRIPTION	DATE	APPROVED
P1	PRODUCTION RELEASE	5/7/2021	J.MAXWELL

MATERIAL: BRONZE
 FINISH: MACHINED
 APPROX. WEIGHT: 4.53 LBS.

MODEL
P1
 REVISION

SPECIFICATIONS:

THE AQUA CREEK PRODUCTS SCOUT-HOYER LIFT ADAPTER SHALL BE A SLEEVE TYPE ANCHOR ADAPTER, USED TO ADAPT A ϕ 1.90"X6.00" POST TO A ϕ 2.63" INSIDE DIAMETER ANCHOR THAT IS ATLEAST 6.00" DEEP. THE ADAPTER SHALL BE MADE FROM BRONZE.



SECTION A-A



ANCHOR - ADAPTER SLEEVE 2.63X1.90
HOYER ADAPTER - INV02304
PART NO. F-826

TOLERANCES

DIMENSIONS ARE IN INCHES
 UNLESS OTHERWISE SHOWN
 FRACTIONAL: \pm 1/16
 ANGULAR: \pm 1°
 TWO PLACE DECIMAL: \pm .01
 THREE PLACE DECIMAL: .. \pm .005



9889 GARRYMORE LANE
 MISSOULA, MT 59808
 (406) 549-0769
 FAX (406) 549-2602
 www.AquaCreek.com

PROPRIETARY AND CONFIDENTIAL INFORMATION

THIS DRAWING AND ALL INFORMATION CONTAINED HEREIN IS THE SOLE PROPERTY OF AQUA CREEK PRODUCTS LLC. ANY REPRODUCTION IN PART OR AS A WHOLE WITHOUT WRITTEN PERMISSION FROM AQUA CREEK IS PROHIBITED.

*SPECIFICATIONS ARE SUBJECT TO CHANGE WITHOUT NOTICE

ANCHOR - ADAPTER SLEEVE 2.63X1.90
 F-826

51-163-220

SCALE
 1:2

SHEET
1